

A visual interpretation of the history of Steamboat Springs: 1871-1950

Presented at the 2013 Virginia and Truckee Railroad History Conference

By Curtis Reid

Where are we talking about?

Located just south of the Mount
Rose Junction off Old US 395



A brief overview of Steamboat Springs

First located in 1860 by Felix Monet

Once had the 3rd largest geyser in the US; between 60 and 80 feet tall

Intermittent geyser activity through the years, depending on drought and geologic conditions. All geyser activity ceased in 1988 with construction of a nearby geothermal energy plant.

Several hotels and spas were built in the area, burning down and rebuilding over the years.

V&T reached the area in 1871, building from Reno south to Carson.

Tracks completed in 1872.

Tracks existed / in service until abandonment in 1950.

1871



Tracks from Reno reach Steamboat

1872



An engine house (and probably a turntable) are built. The freight depot is moved to Carson. Tracks reach Carson City and the line is opened.

1874



Rapp Bros. erects hotel and other buildings

1876



Passing siding is in place by now

1880



South hay siding is added; Steamboat ditch completed

1881



V & T warehouse gone by now

1888



Engine house is removed

1891



Turntable rebuilt; switch moved (as part of attempt to build wye?)

1900



An earthquake closes the main geyser

1901



Fire burns most buildings to the ground

1904



A-frame turntable replaced by 2nd-hand iron turntable

1907



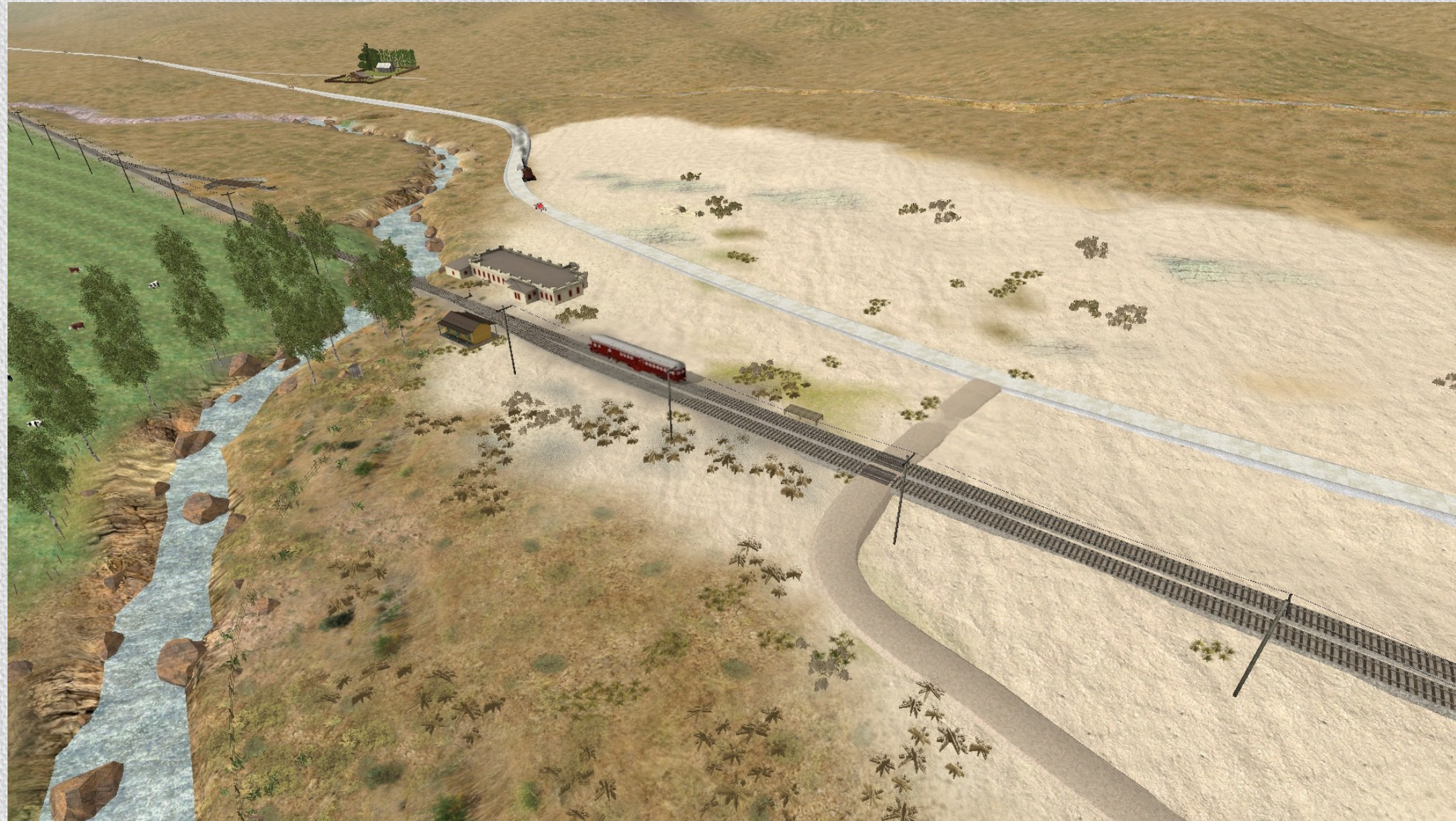
New wood platform; stock chute

1916



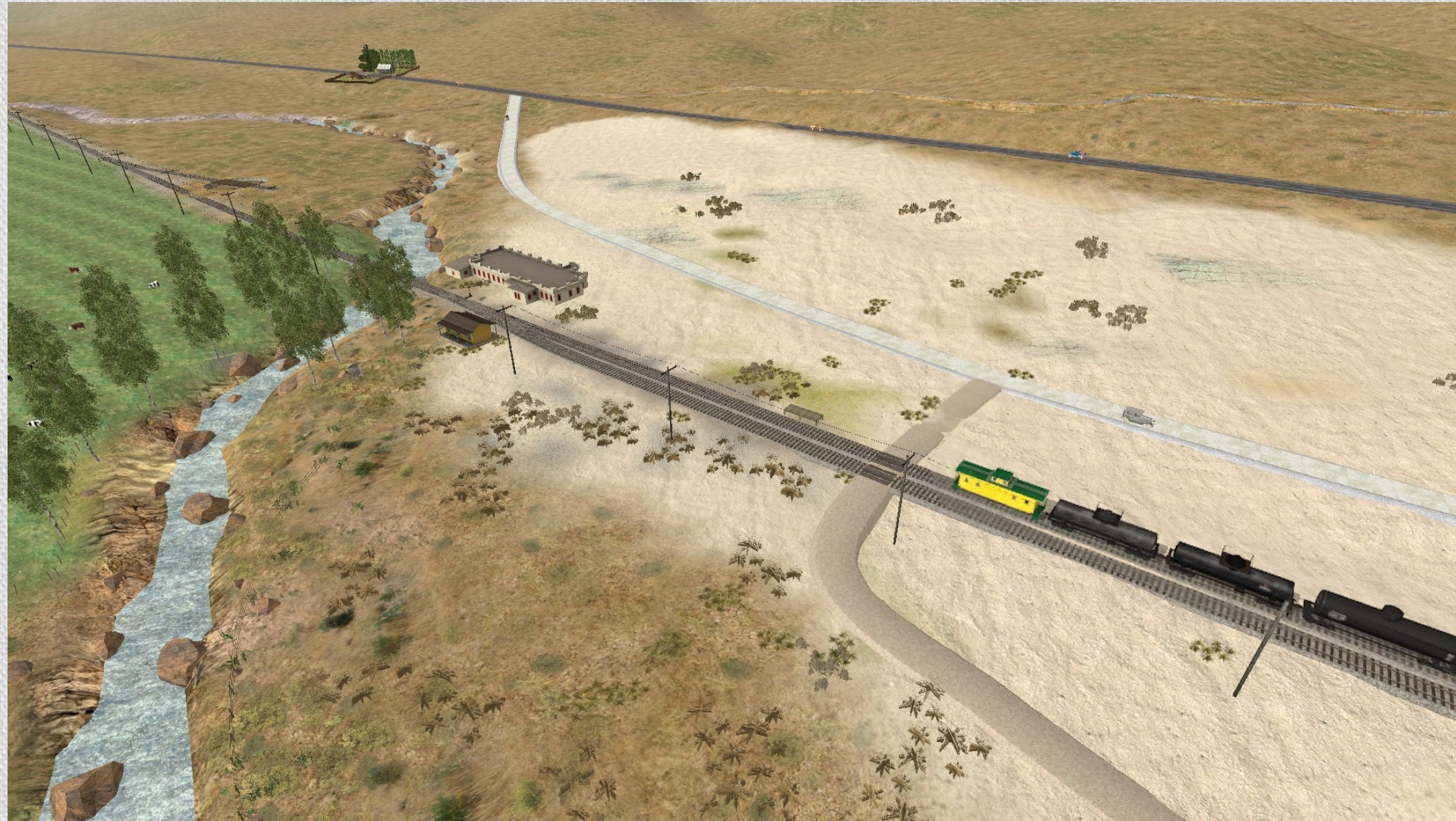
South Hay siding and stock chute removed by now

1921



Concrete highway completed (15' wide)

1930



Highway widened to 20', alignment changed to present route

1941



Turntable removed

1950

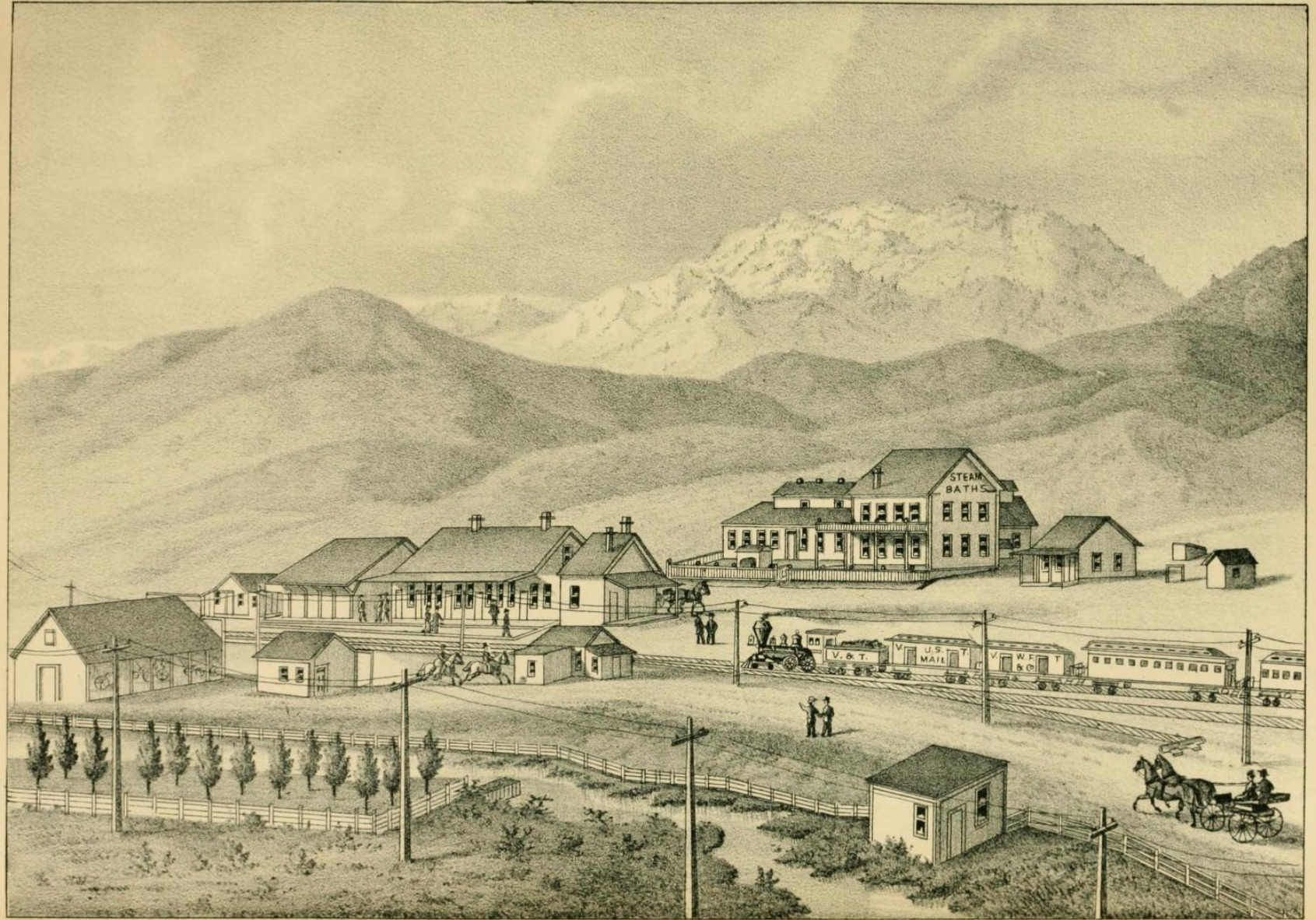


V&T abandoned; tracks removed. Only the bridge remains.

Historical Images

1880?

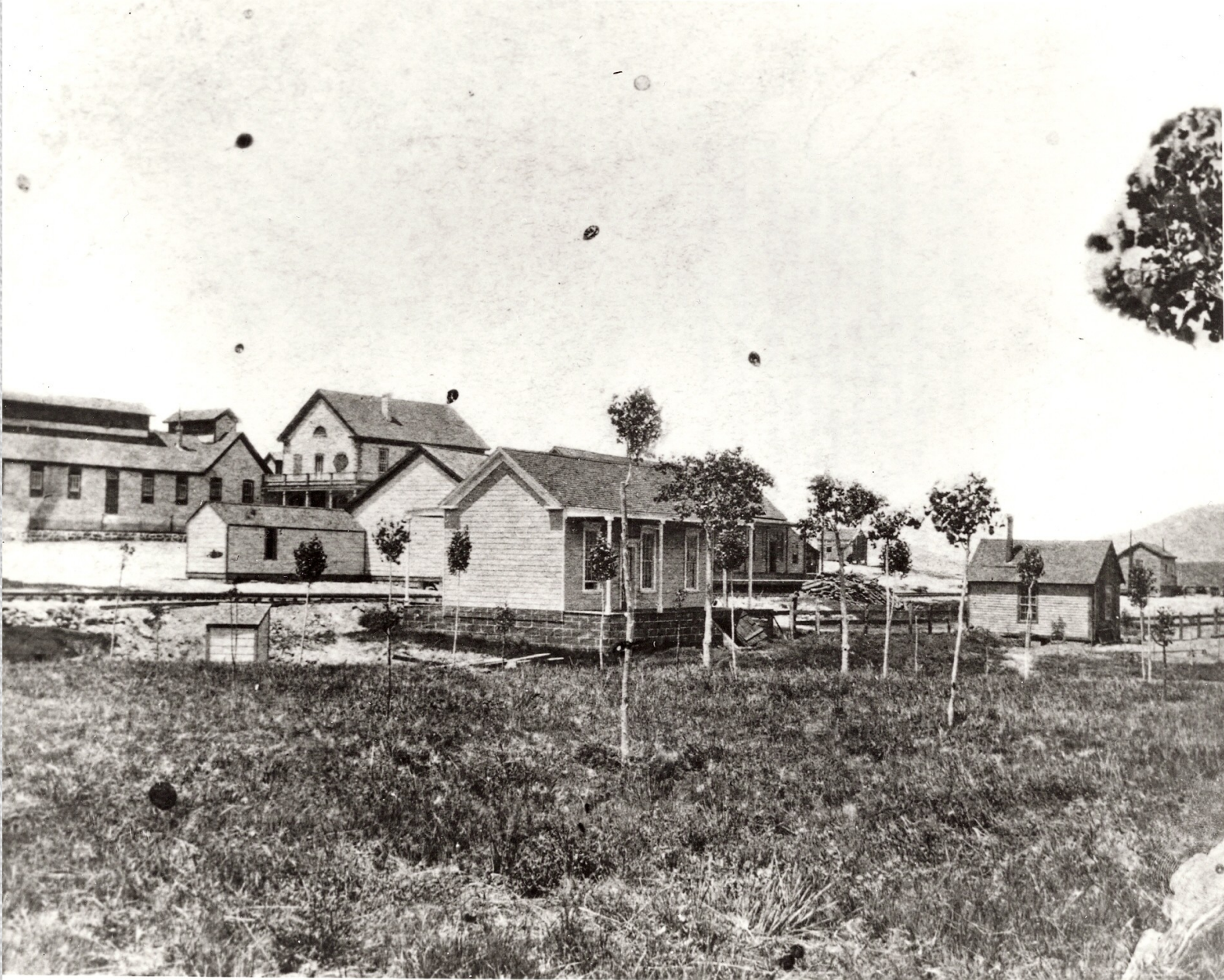
STEAMBOAT SPRINGS, WASHOE COUNTY, NEVADA.



MOELLER & SCHOENEMAN, PROPRIETORS.

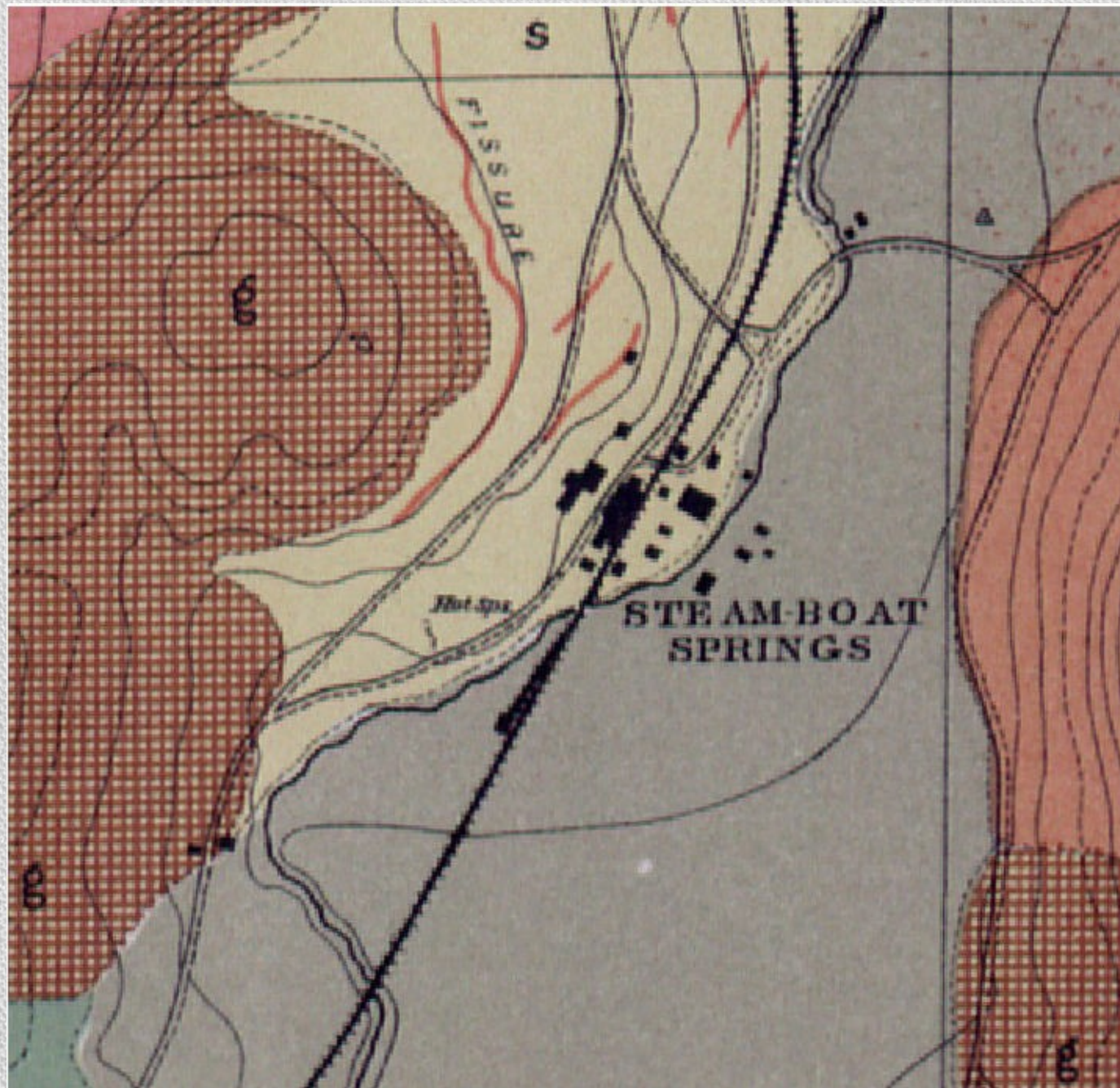
History of Nevada: Myron Angel

187x?



John S. Noe

1885



snippet from 1885 USGS map from 1887 Becker Atlas
Courtesy the DeLaMare Library, University of Nevada, Reno

July 6, 2007



References

Atlas to accompany a monograph on the geology of the quicksilver deposits of the Pacific Slope (includes Atlas Sheet XIV: Steam-boat Springs, Nevada); 1887, George F. Becker (<https://contentdm.library.unr.edu/u?hmaps,4827>)

Engine Terminals on the Virginia and Truckee. Presentation by Thomas Smith. 2010.

General history and resources of Washoe County, Nevada, published under the auspices of the Nevada Educational Association January 1, 1888. Reprinted September 1969 by Sagebrush Press.

<https://geysers.org/SteamboatSprs/report/report-contents.php>

Historical/Architectural Survey Report: US Highway 395 through Washoe Valley, Pleasant Valley, & Steamboat Springs, Washoe County, Nevada, DRAFT. Koval, Ana B. and Katherine Boyne. Prepared for the Nevada Department of Transportation by Rainshadow Associates. November 1994.

History of Nevada with illustrations and biographical sketches of its prominent men and pioneers.
Published 1881 by Thompson and West in Oakland, Cal

ICC Valuation survey 1916-1917

Nevada-state-journal/1937-06-17

Paul Williams website - <http://www.paulrwilliamsproject.org/gallery/steamboat-springs-nevada-rehabilitation-center/>
Steamboat, Nevada. Presentation by Stephen Drew. 1988.